

# Fundamental Operation

## 1. Start network management monitor program

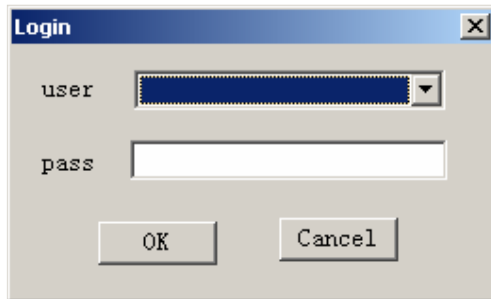
Method 1: operate from “start program”

Open “start” menu on WINDOW desktop, then enter sub-menu step by step: program, snmp, network management system, network management system click snmpmanage.exe, that is, can start network management monitor program.

Method 2: operate from “desktop”

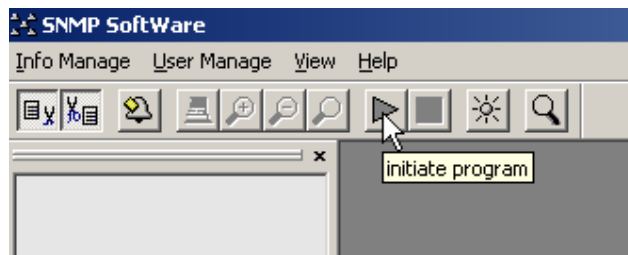
When installing network management monitor program, an icon of network management monitor program will be increased on your desktop. Double-click this icon then network management monitor program can be started.

## 2. Enter network management monitor program



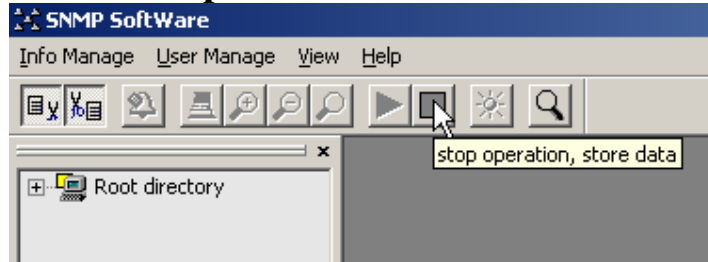
After start of program confirm window of a user name and password will be ejected. Input correct user name and password then can enter network management monitor program. If three times of wrong user name and password, program will be automatically receded.

## 3. Start operation



Click start button, program will start background process and manage all known equipments.

## 4. Terminate operation



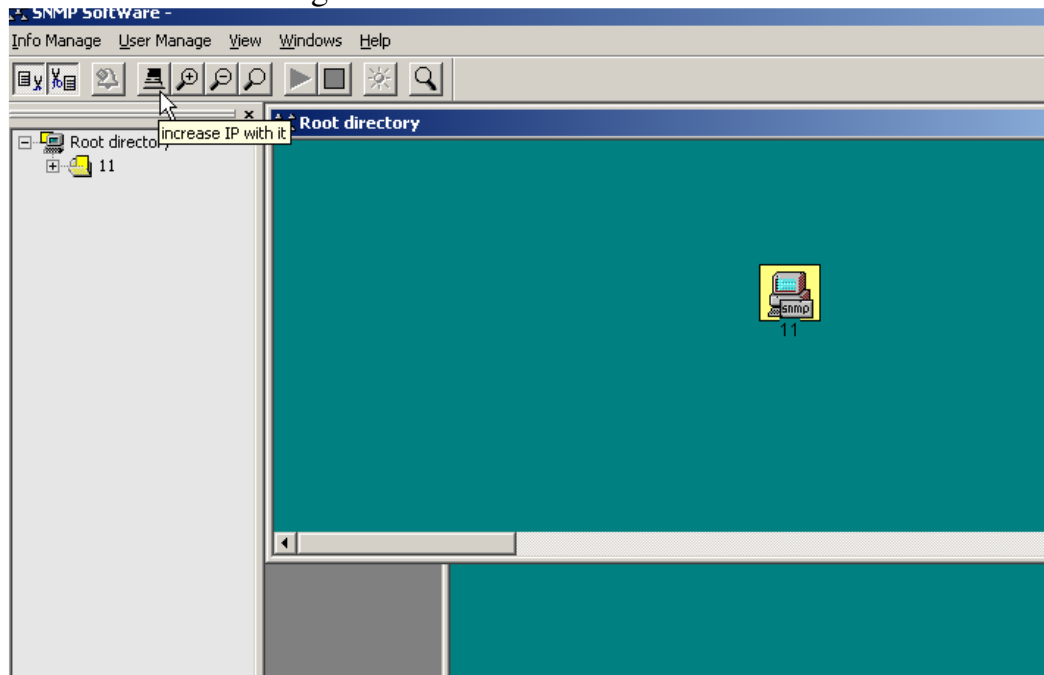
After pressing start button in program, after-ward managing process can be terminated with terminating operation button.

Program can be returned to initial status. It's main function is to reserve all data during operation.

Prevent that due to unstable system when program withdrawing, there will appear abnormality and lose all data..

## 5. Operation of network management card (chassis) (Addition and delete)

Add IP (as following)

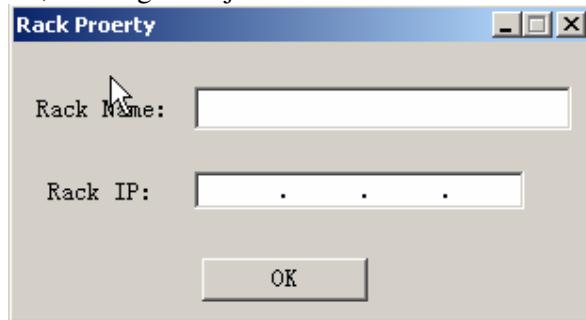


(1) Double-click sub-item of “root directory” in left tree-type, a dark blue sub-window will be opened then.

(2) Click “add IP” button in tool fence.

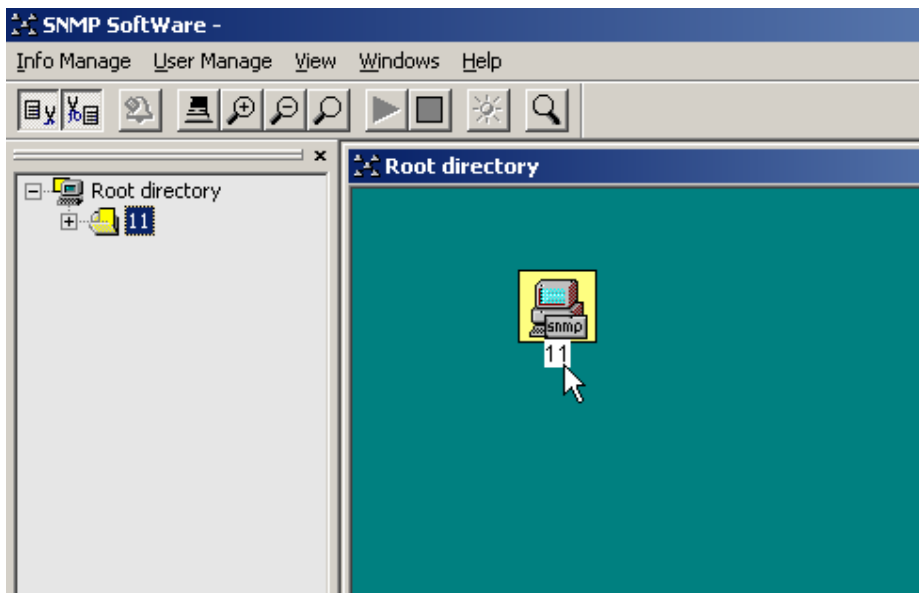
(3) Then click in sub-window of “root directory”, which means a network management card is added in this window.

By now, a dialog box ejects as follows:



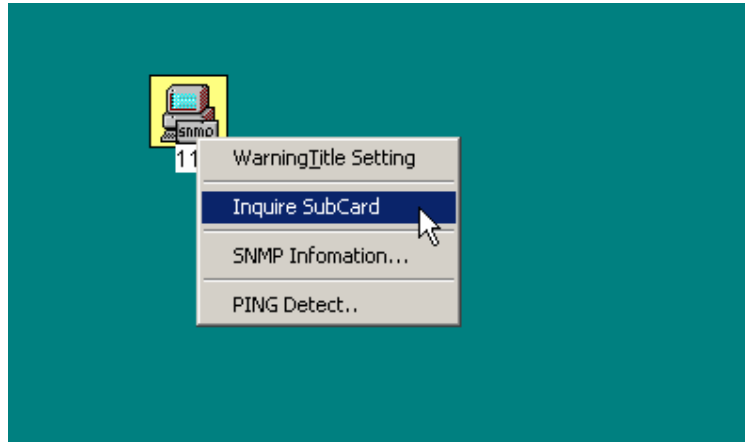
Input name and IP of this chassis. At this time addition of chassis is finished.

**Delete IP** (as follow graph)。



Click all icons of network management card needed operation, then press “Delete” key in keyboard, then all equipments of network management card will be deleted.

## 6. Inquire sub-card



Click the icon ,then click the right arrow and one menu will eject, then click sub-card. This function could add equipment automatically according to added IP.

## 7、 Agent SNMP information check

Click “Agent SNMP information check” and one “Agent SNMP information check” dialog box will eject as following:

A screenshot of the 'Agent SNMP Info...' dialog box. The dialog box has a title bar with the text 'Agent SNMP Info...' and standard window controls. It contains several input fields for network-related information: IP (192.168.0.140), NetMask (255.255.255.0), MAC (00:11:22:33:44:55), GateWay (192.168.0.20), TimeTick (11:43:06.07), and ManageIP (192.168.0.30). There is also a text area for 'System' containing the text 'this is snmp system v4.0'. At the bottom, there are 'OK' and 'Exit' buttons. A status bar at the very bottom shows 'communication statu' and 'communication OK'.

## 8、 historical warning records check

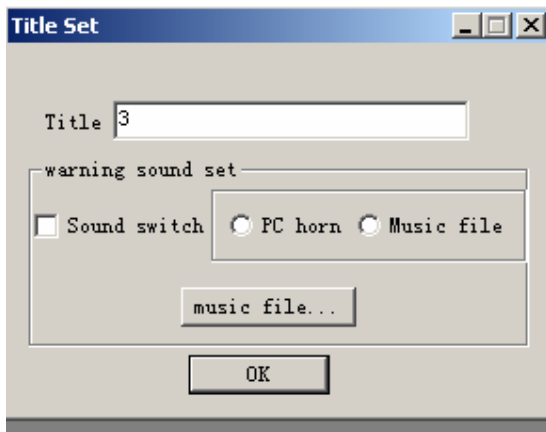
click the icon in the following window you want to check,then click the right arrow.





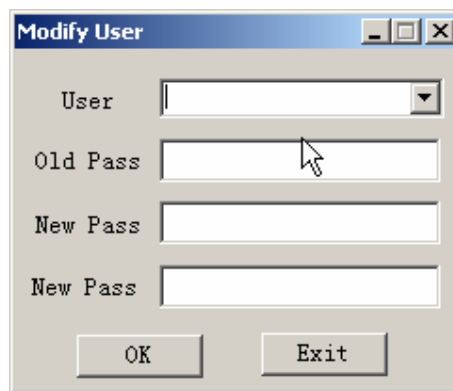
click "ok", and you can modify the title.

the icon title set as followings:



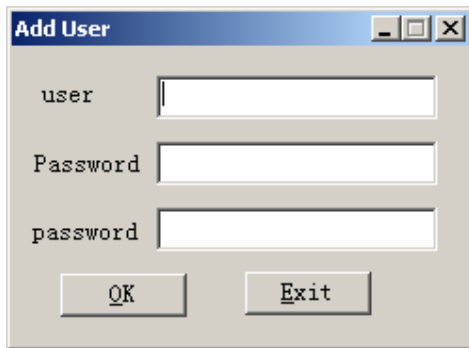
there is one more sound switch, compared to SNMP card set. Voice warning can be added to every equipment. E1 warning with short time and optical warning with long time.

## 10、 user and password modification



Select safety set and password modification, and one “password modification” dialog box will eject. please input user’s name, old password ,new user’s name and new password, confirm password, then click “ok”

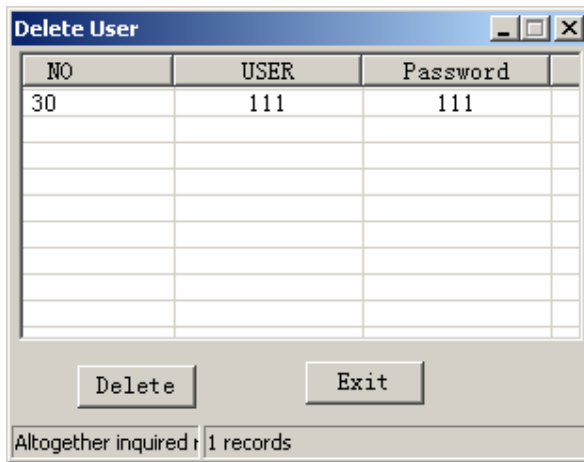
## 11、 Add user



The 'Add User' dialog box features a title bar with standard window controls. It contains three text input fields: 'user', 'Password', and 'password'. At the bottom, there are two buttons labeled 'OK' and 'Exit'.

Input user’s name ,password, and confirm password, then click“ok”(password is the same as confirm password).

## 12、 Delete user



NO	USER	Password
30	111	111

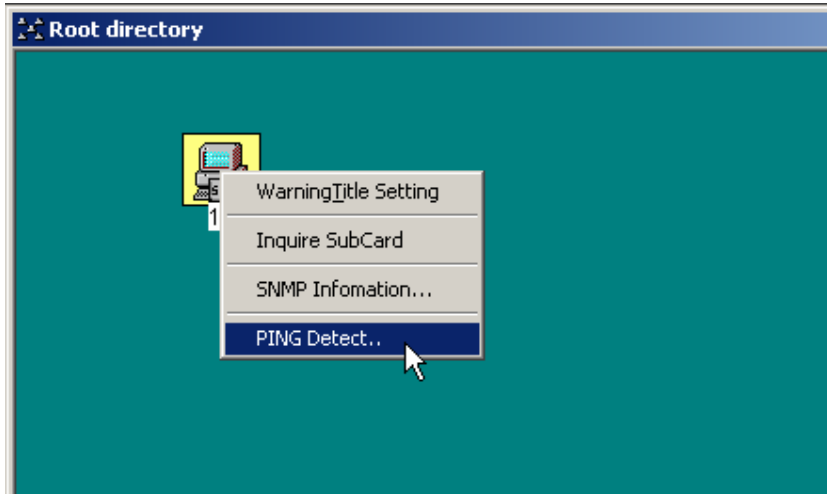
Buttons: Delete, Exit

Altogether inquired 1 records

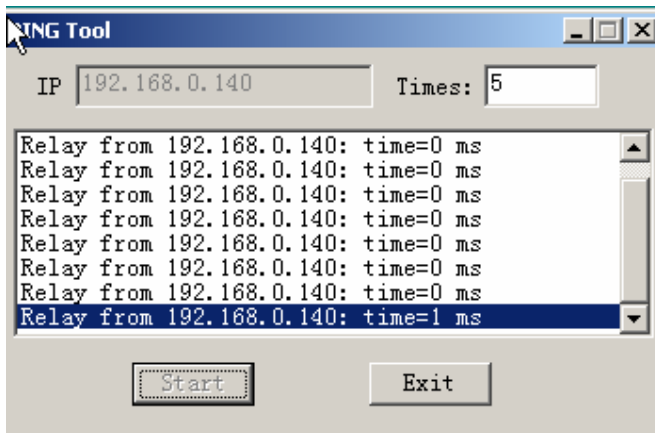
Select the user’s name, then press “delete” button.

## 13. PING TEST

PING function is easy for user to test current network condition.

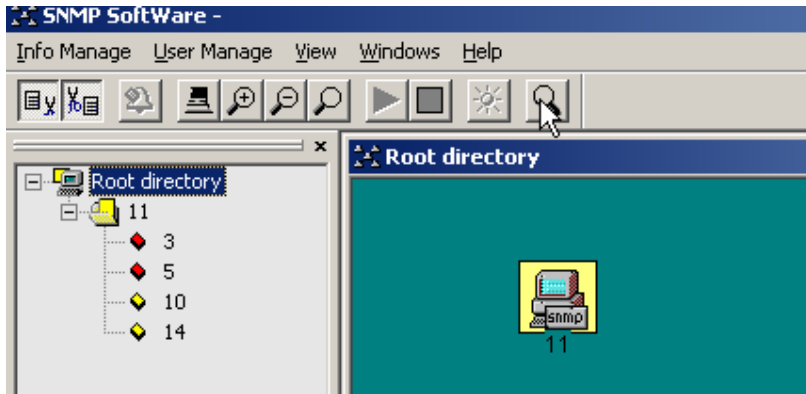


**The PING window as followings eject:**

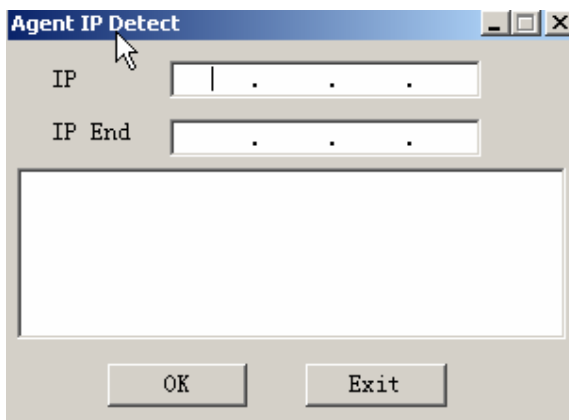


## **14.SNMP card IP scan**

When user modifies SNMP card IP by mistake, it couldn't connect to SNMP card .if you use card IP scan, you can scan SNMP IP address.



Click the icon on the right above



when input IP address, and you can scan one by one automatically.